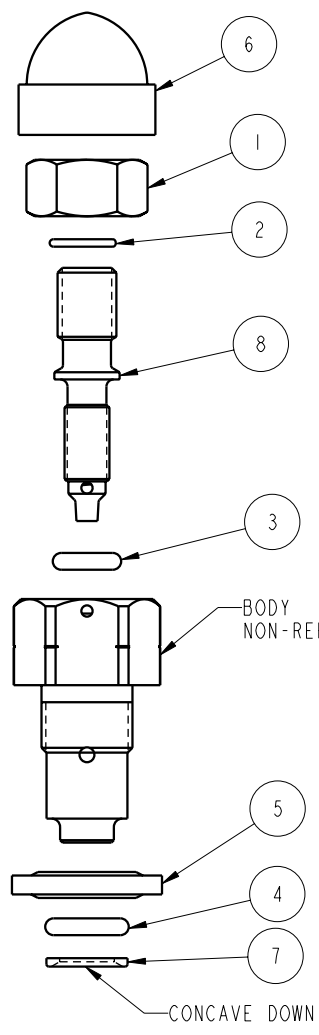



1			2	
MODEL NO.		MODEL NAME		
47020371		ASSY, FLOW CONTROL, G1/8, 15.16		
NO.	QTY	PART NO.	DESCRIPTION	SEAL KIT
1	1	21420020	NUT, HEX, 1/4-28, NYLON	NO
2	1	23002018	RETAINING RING, ROUND, INTL, 7mm	NO
3	1	39000076	O-RING, (-007), .145x.070, 90 AUD	YES
4	1	39000077	O-RING, (-009), .208x.070, 90 AUD	YES
5	1	39055006	SEAL, BONDED, 1/8 BSPP	YES
6	1	68050004	CAP, DOME, HEX, 1/4	NO
7	1	87000040	SPACER, FLOW CONTROL, G1/8	NO
8	1	97020000	ASSY, NEEDLE & STEM, SAE2 / G1/8	NO
N/A	N/A	60701608	KIT, SEAL, FLOW CONTROL, G 1/8	NOTED



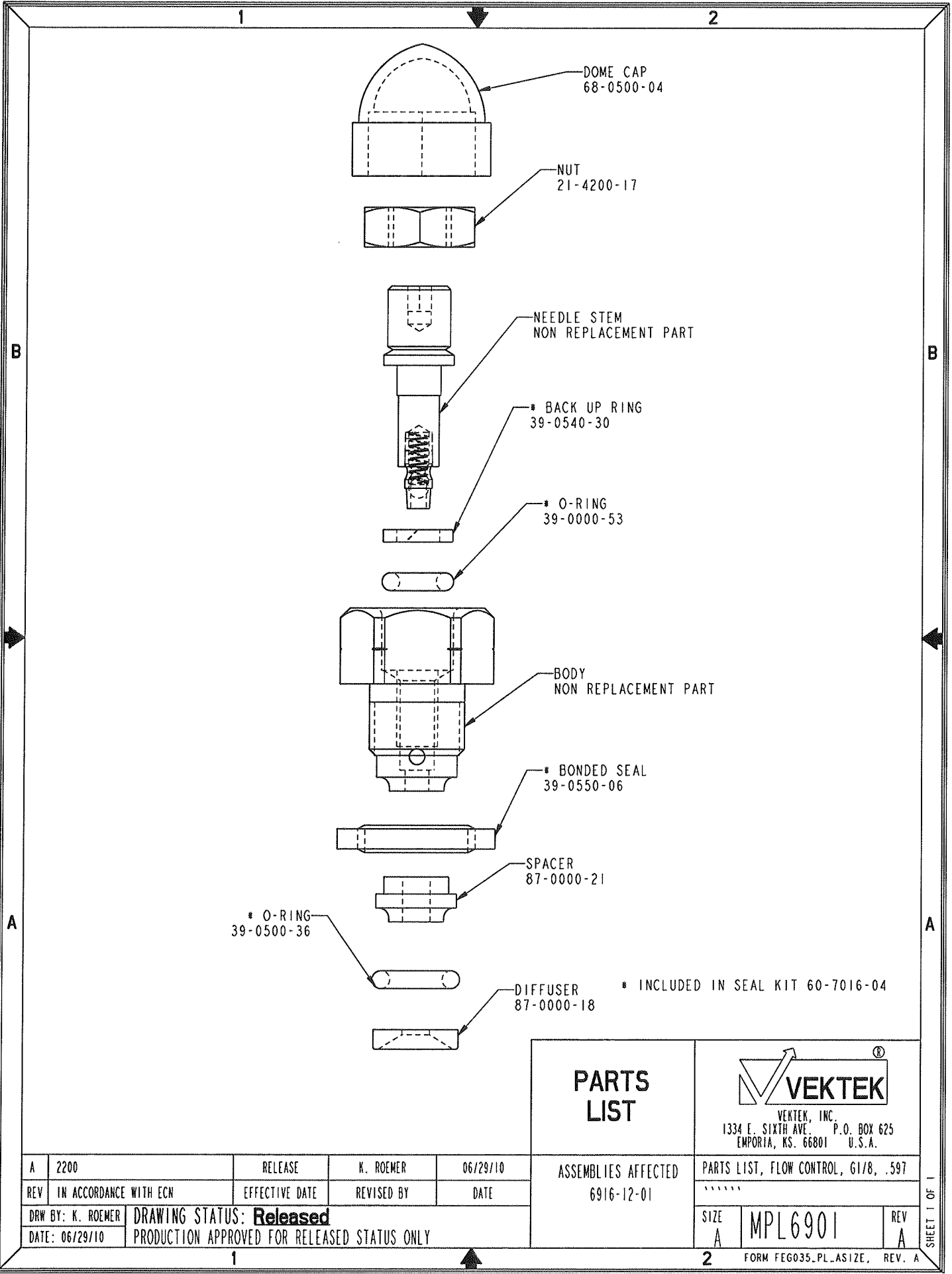
THIS IS A TWO PAGE PARTS LIST.
 THIS FIRST PAGE APPLIES TO
 MODEL NO. 47-0203-71 REVISION "D"
 AND LATER REVISIONS.
 THE SECOND PAGE APPLIES TO REVISION "C"
 AND EARLIER REVISIONS.




- NOTES:
 1. APPLY LUBRICANT TO ALL SEALS
 PRIOR TO INSTALLATION.
 2. DO NOT USE SILICONE TYPE LUBRICANTS.

PARTS LIST	 VEKTEK, INC. 1334 E. SIXTH AVE. P.O. BOX 625 EMPORIA, KS. 66801 U.S.A.
	PARTS LIST, ASSY, FLOW CONTROL, G1/8, 15.16 *****
ASSEMBLIES AFFECTED 47-0203-71 L7-0203-71	SIZE A MPL6901
REV D	SHEET 1 OF 1

D	2583	RELEASE	JDW	10/29/13
REV	IN ACCORDANCE WITH ECN	EFFECTIVE DATE	REVISED BY	DATE
DRW BY:	K. ROEMER	DRAWING STATUS: Released		
DATE:	06/29/10	PRODUCTION APPROVED FOR RELEASED STATUS ONLY		



PARTS LIST	 VEKTEK VEKTEK, INC. 1334 E. SIXTH AVE. P.O. BOX 625 EMPORIA, KS. 66801 U.S.A.	
	ASSEMBLIES AFFECTED 6916-12-01	PARTS LIST, FLOW CONTROL, 61/8, .597
SIZE A	MPL6901	REV A
FORM FEG035_PL_ASIZE, REV. A		SHEET 1 OF 1

A	2200	RELEASE	K. ROEMER	06/29/10
REV	IN ACCORDANCE WITH ECN	EFFECTIVE DATE	REVISED BY	DATE
DRW BY:	DRAWING STATUS: Released			
DATE:	PRODUCTION APPROVED FOR RELEASED STATUS ONLY			